

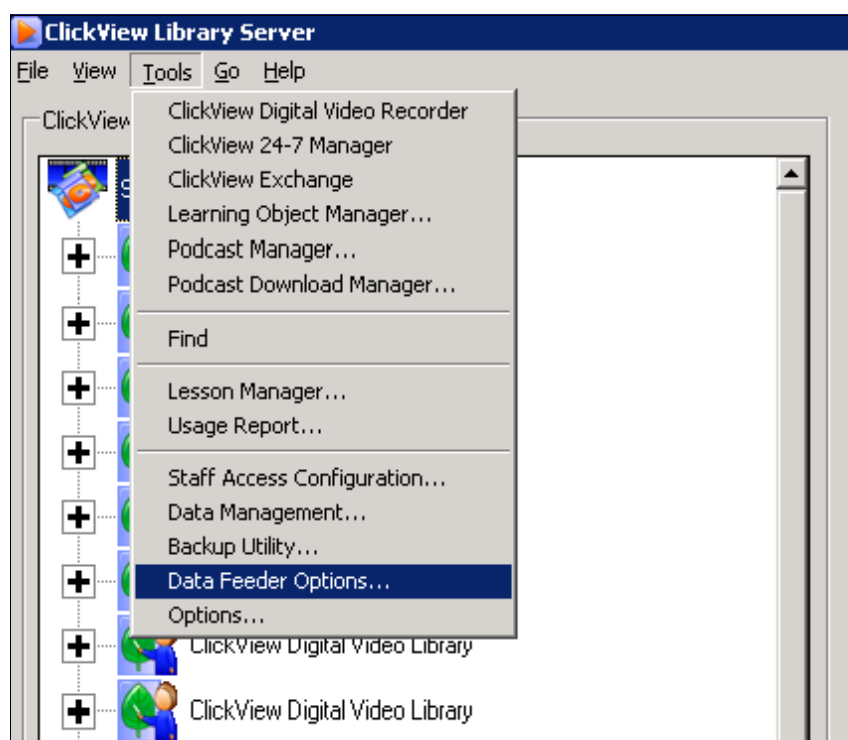
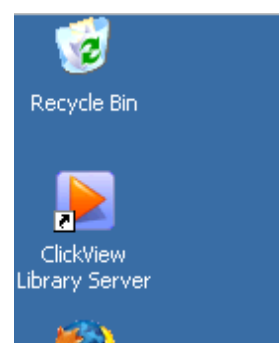
ClickView - Integration within Access-It Library

There are two steps to this integration. Step 1 involves setting up the data feed from ClickView. Step 2 is where the records are scheduled to automatically import into Access-It Library.

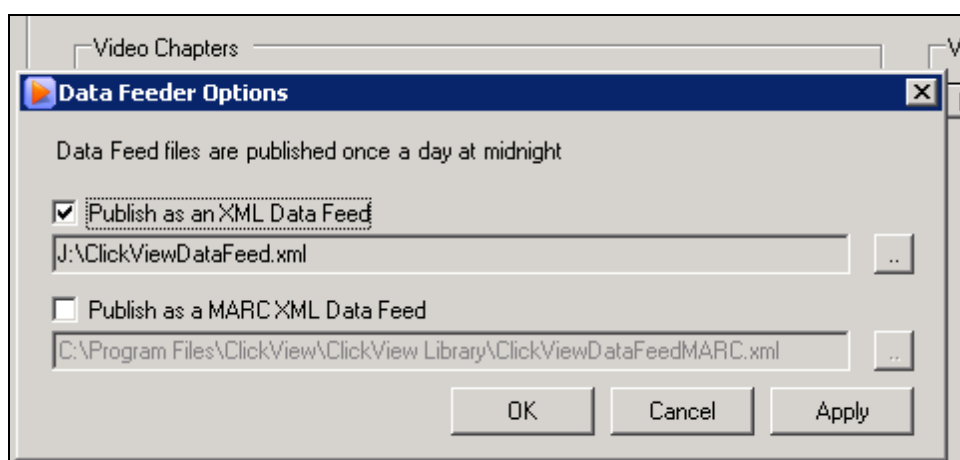
Within ClickView - Step 1:

a) The first thing is to set up the data feed from the ClickView Library Server. To do this, launch the ClickView Library Server. (This will have been installed as part of the ClickView installation)

b) From the following screen, choose “Data Feeder Options ...”



c) You can now choose where the data feed XML file should be saved. This XML file must be saved where it can be accessed by the Access-It Background Task Scheduler (usually this is on the Access-It server). For example, in the case below, a system sharepoint (J:) has been created on the Access-It server, so that the XML file from ClickView could be saved to this location.



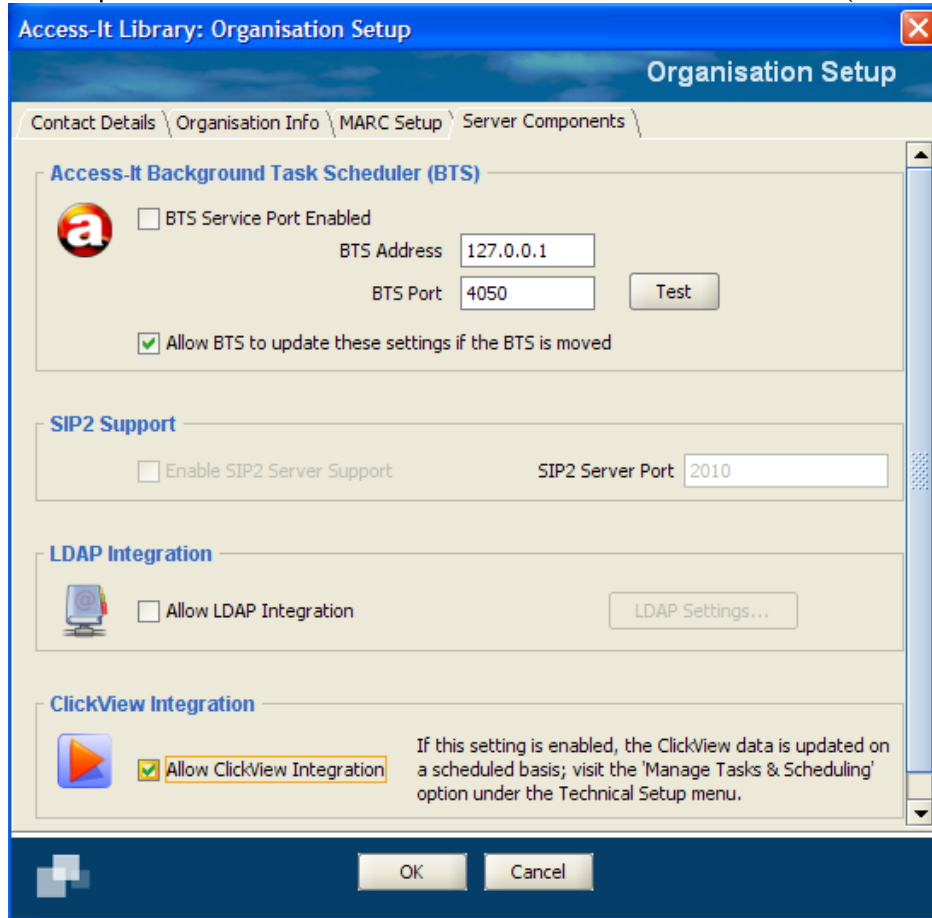
The ClickView Library server will then export this XML file at a preset time of midnight.

Within Access-It Library - Step 2:

a) From within Access-It Library, navigate to the Organisation Setup:



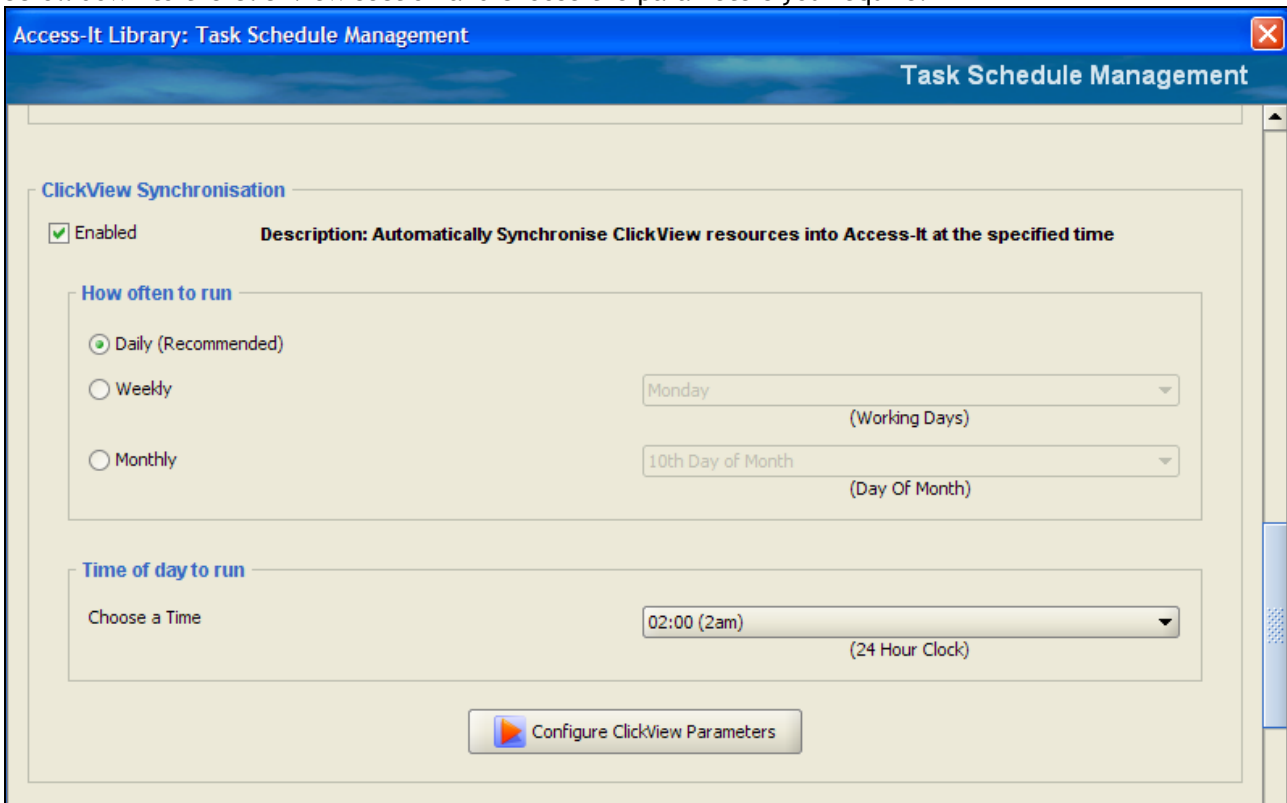
Click the “Server Components” tab and make sure the ClickView checkbox is ticked (see below):



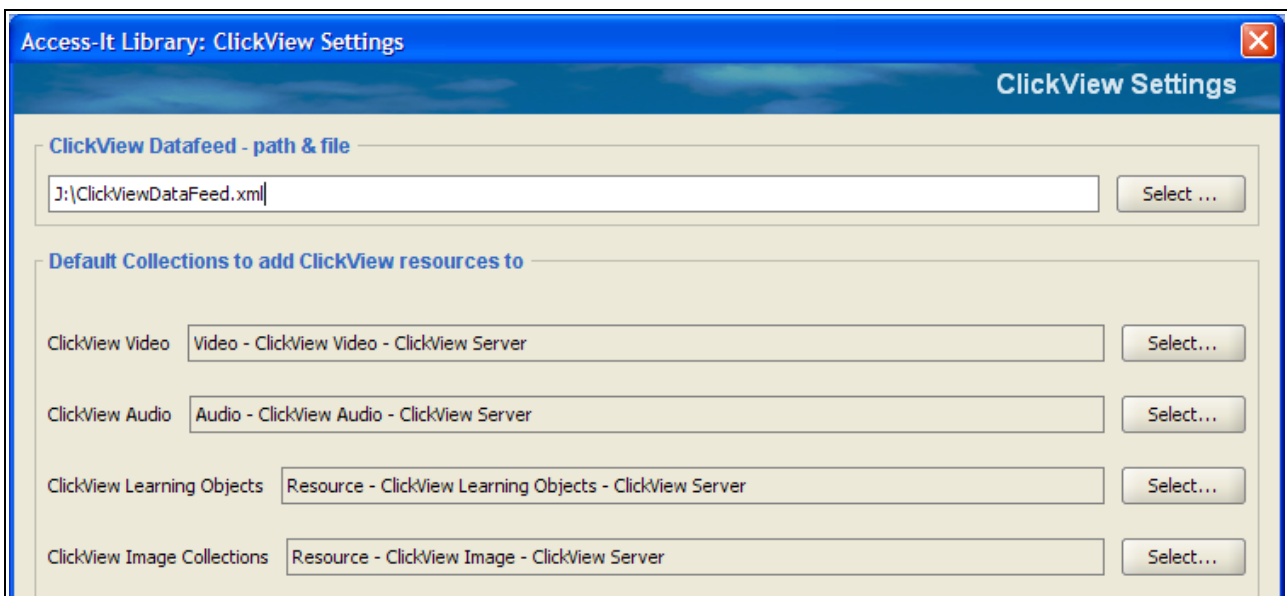
b) Now, within “Technical Setup”, choose “Manage Tasks & Scheduling”:



Scroll down to the ClickView section and choose the parameters you require:



- c) Open the “Configure ClickView Parameters” button, and enter the path and filename as you defined it in Step 1 c) above.



Note: It is common for users to first create default collections for the ClickView resources. This would be done from within Access-It: Choose “Cataloguing” -> “Collections (Item Types)”.

Some examples might include:

- A video collection (Media = Video) could be created, with Type = ClickView Video, and Location = ClickView Server.
- An audio collection for ClickView Audio (eg. Media = Audio; Type = ClickView Audio; Location = ClickView Server)
- A ClickView Learning Objects collection could be (Media = Resource; Type = ClickView Learning Objects; Location = ClickView Server)
- A ClickView Image collections could be (Media = Resource; Type = ClickView Image; Location = ClickView Server)

1 d) Generally ClickView XML feeds will happen overnight. If however this has already taken place, you could click the "Start synchronisation now ..." to begin this immediately. Otherwise, the Access-It Background Task Scheduler will synchronise this in the middle of the night.

Tip: If - when you click on a ClickView link - you get a message telling you that the "URL has been copied to the clipboard", it means your user has not been set to allow direct launching of URLs (i.e not allowed to go directly to the link via Access-It). To change this, go to the Library Setup menu, select User Settings, then the user profile you wish to modify and tick the box called "Launch Web URLs".

Once the above has been set up, the ClickView Data Feed and Synchronisation with Access-It should happen in an automatic and seamless manner. Once updated, the ClickView resources that are added to your collections are then able to be utilised immediately.